

Sealed Type Thermofforming Machine



General Specifications

Thermo Forming Machine Spec.		Optional
Max. Forming Ht/Depth (mm)	200/200	Coating Rollers
Max. Film Thickness (mm)	1.5	Water Sprayer
Max. Forming Speed (/minute)	5~6 cycles	Motorized Loader
Air Compressor (HP)	10~15	HMI
Vacuum Pump(L)	165~190	
Chiller(°C)(3T)	10~15 °C	
Power Supply	AC 220 / 380	

Main Features

- Quick heating Electric Box, precision positioning, vibration free to avoid electrical short circuit.
- Adopt track adjust temperature control, sectional heating area for quick and stable heating temperature control, making the films even and better quality.
- Cassette type wiring for easy installation and maintenance.
- With manual, single, and compound action 3 types of control, which makes testing and continuous operation more convenient.

Main Features

- Mechanical action is programmed control, providing safety and stability.
- Forward and backward railing for forming mould adopts double rail guides, to ensure smooth movement.
- Independent Driving Motor and Brake device. Braking time and speed can be adjusted to achieve effective buffering, as well as accurate and quick unwinding.
- Slack off rail for leveled film unwinding and accurate material length before forming. Automatic reverse when film length is too long, with height adjustment.

Main Features

- Robust high speed fan, wide angle radiator? and water-cooled bottom pan 3 types of cooling.
- Suitable for Thermo Forming of PVC, PET, PS, PP, OPS, and Gilded PVC.
- Choose between Closed or Open Operating Modes, according to the material and moulds used.
- After heating and softening of material, the closed vacuum tank can keep material surface level, or increase the temperature of the material to achieve better molding effect.

Main Features

- Thicker material can be aerated in advance to expand the material, making the material thickness even after forming.
- Easy Die Mold mounting and removal either from side or top.

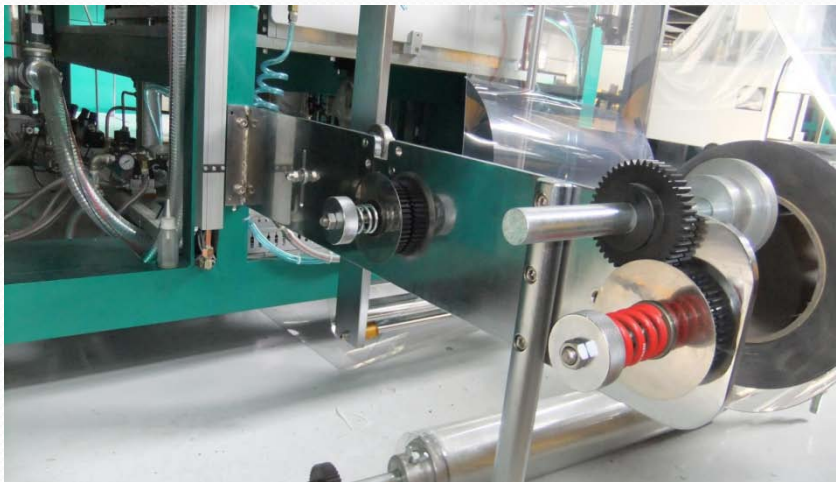
Production Capacity

- Thermo Forming Speed depends on different factors such as : Material and thickness, weather condition, operator adjustments, etc. Below is reference list.

Material/ Thickness	PVC	PS	PET	PP
T : 0.2 mm	10~12 sec	10~12 sec	10~12 sec	
T: 0.3 mm	15~20 sec	15~18 sec	13~18 sec	22~28 sec
T: 0.4 mm	17~22 sec	16~20 sec	15~20 sec	25~29 sec
T: 0.5 mm	21~25 sec	20~23 sec	21~24 sec	30~35 sec

Performance Design

- Material Loading mode: Manual or Motorized.
- Manual Type available for double $\text{Ø}300$ rolls or single $\text{Ø}850$ roll.
- Motorized Type saves time and provides high productivity.



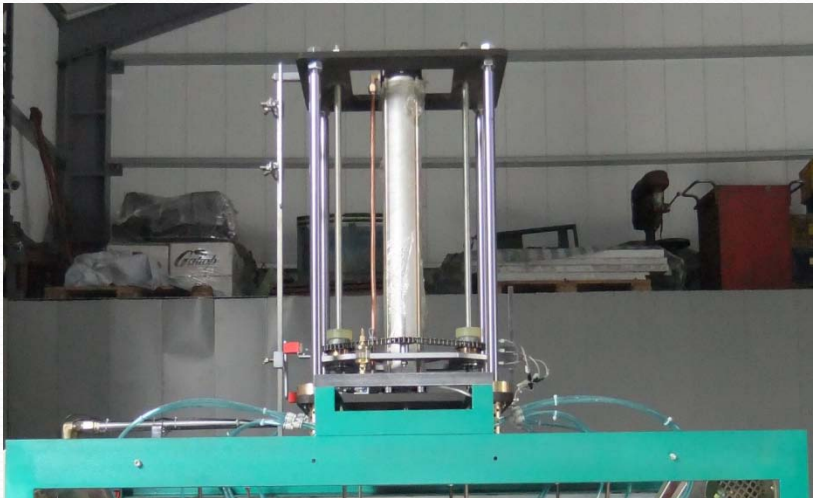
Performance Design

- Material Feeding mode: Pre-Press Type & Unwind Roller Type.
- Manual Type is Recommend for coating applications.
- Motorized Type provides safety and higher productivity.



Performance Design

- Upper Mold Design : Hydraulic Cylinder and 4 shafts providing excellent stability. Buffer device for movement.
- Accurate positioning by Motorized PU Wheel, less wears.
- With guiding rack to prevent damage to material and easier release of finished products.



Performance Design

- Patent designed Lower Mold provides excellent sealing with sealed vacuum chamber.
- Easy opening Sealed doors, effortless Mold changing.
- Isolated Pneumatic Components, preventing damages from heating.



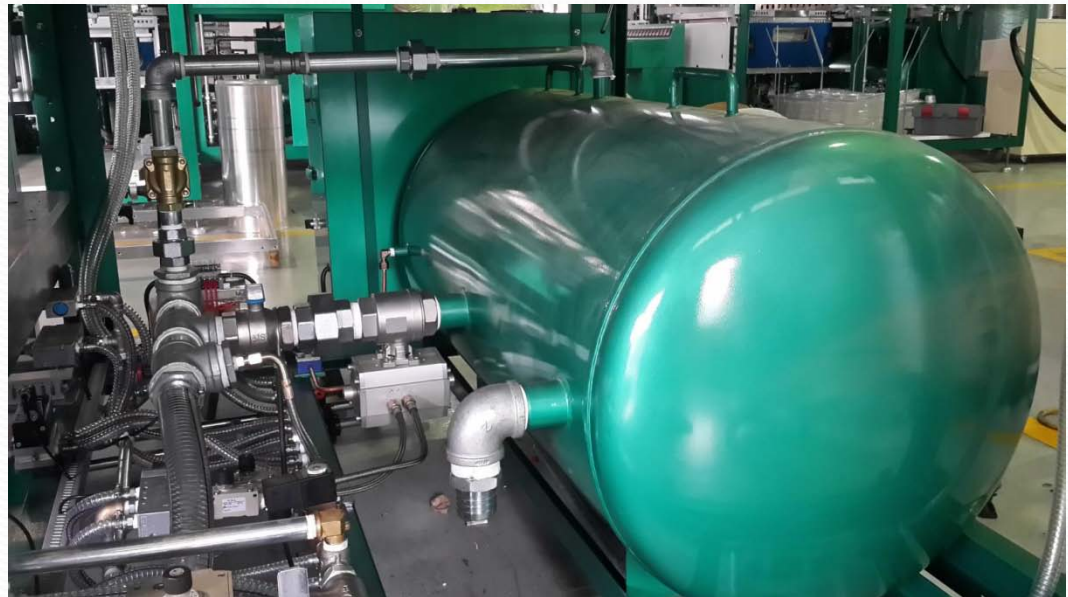
Performance Design

- Patent designed Lower Mold chilling plate with double circulation water passage, double chilling efficiency and avoids clogging.



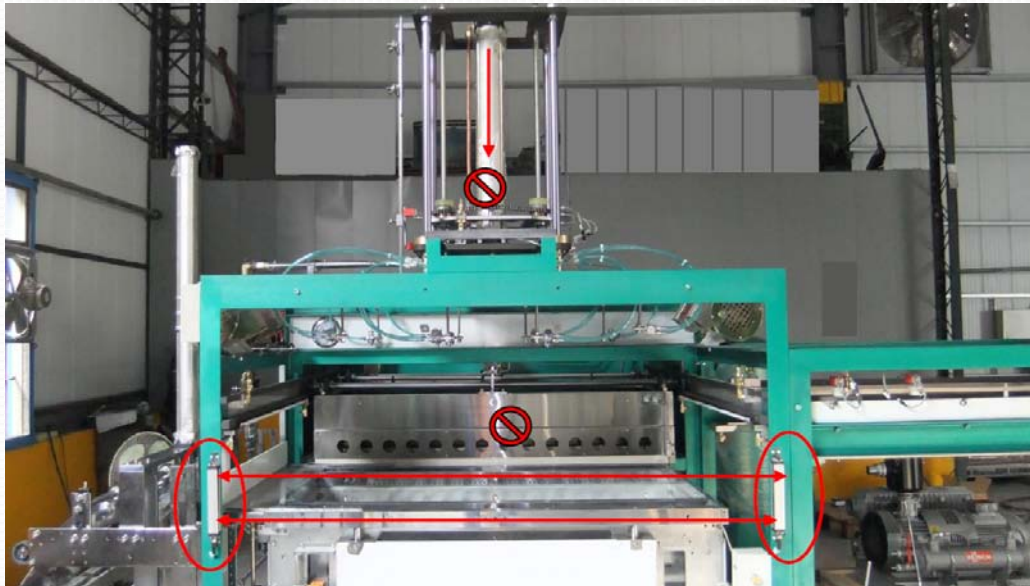
Performance Design

- Vacuum System with 400 liter vacuum tank for greater and stable vacuum capacity.
- Control by Germany FESTO Rotary Cylinder, vacuum is evenly supplied to Forming Chamber for high quality products.



Safety Features

- No sharp edges on machine spare parts.
- All electrical components with short circuit protection.
- Upper Mold automatically stops when no air or electricity.
- Sensors on Heat Stove, Clipping Device to prevent operator errors.



Precision Hydraulic Single-Side Auto Feed Cutter

- Body frame adopts high tension steel plate under stress relief process for long application without being deformed.
- Super precision oil way design.





Q & A

**Thank you
for choosing iPACK!**